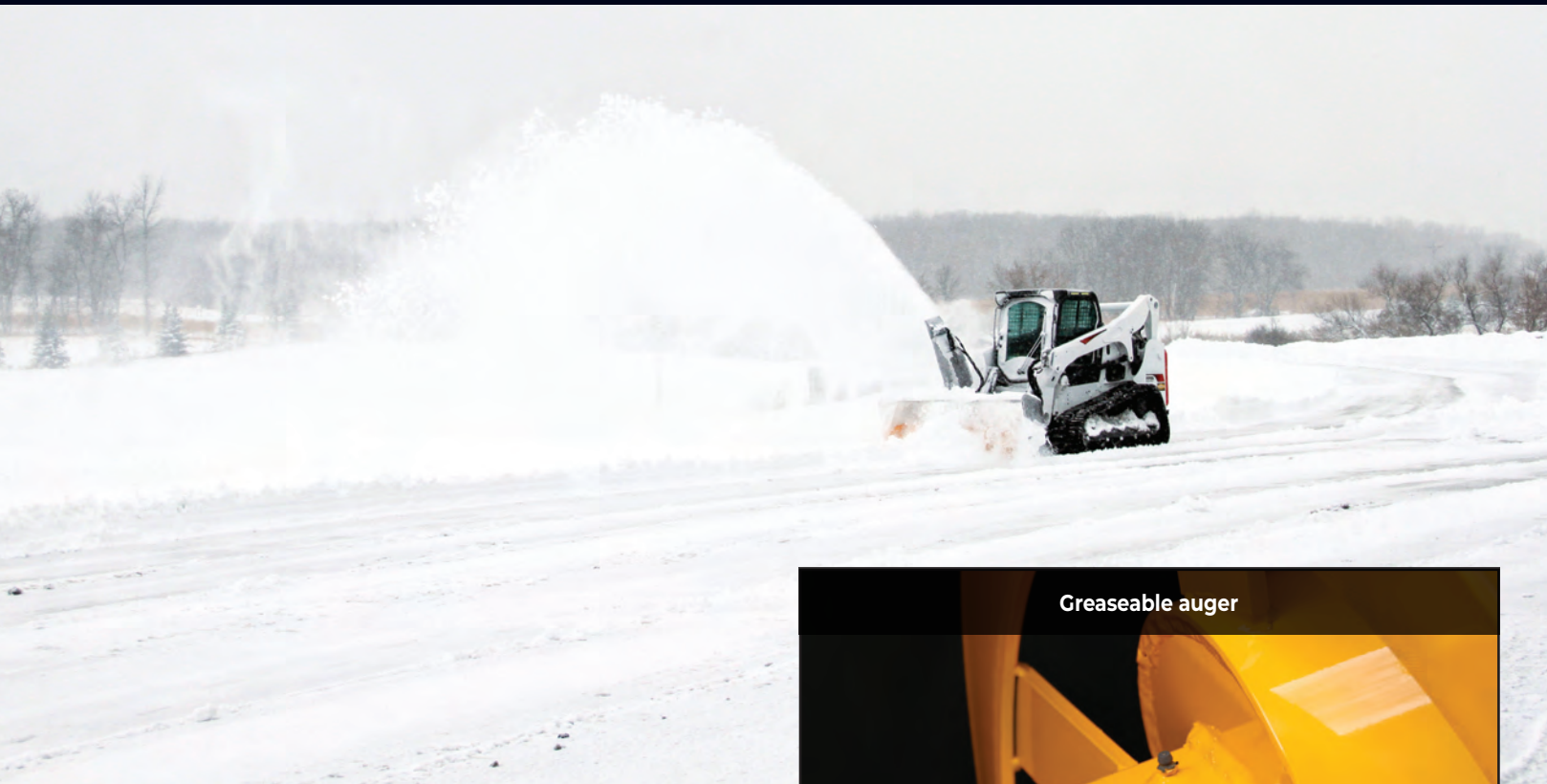
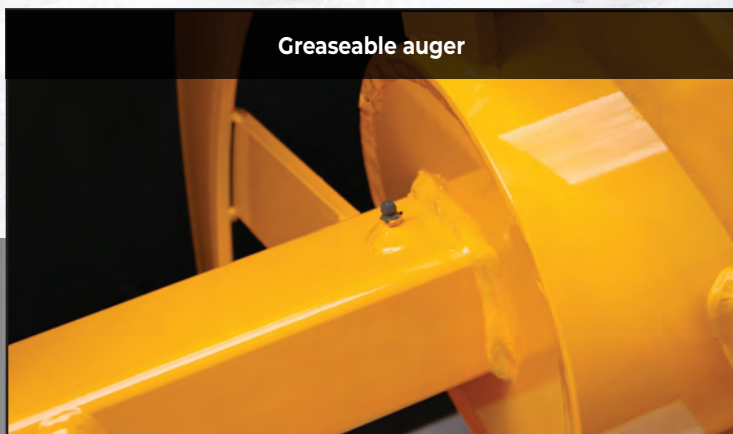


# Hydraulic Snowblower 2420 Series

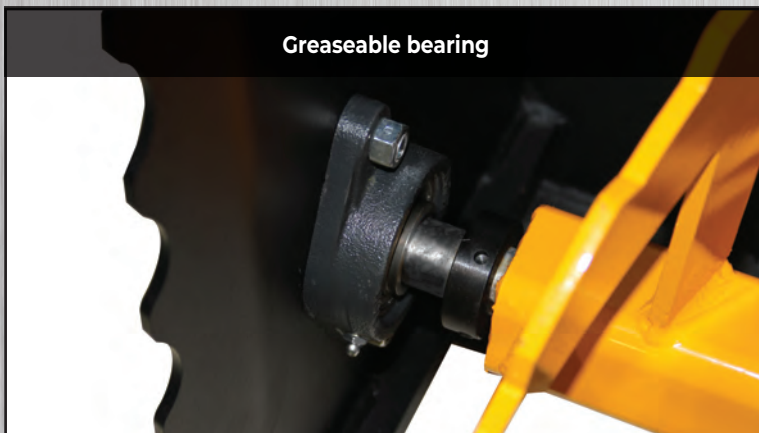


Knowing your skid steer loaders gallon per minute and hydraulic pressure specs are crucial. To cast snow up to 45 feet, it needs to be set up properly.

Greaseable auger



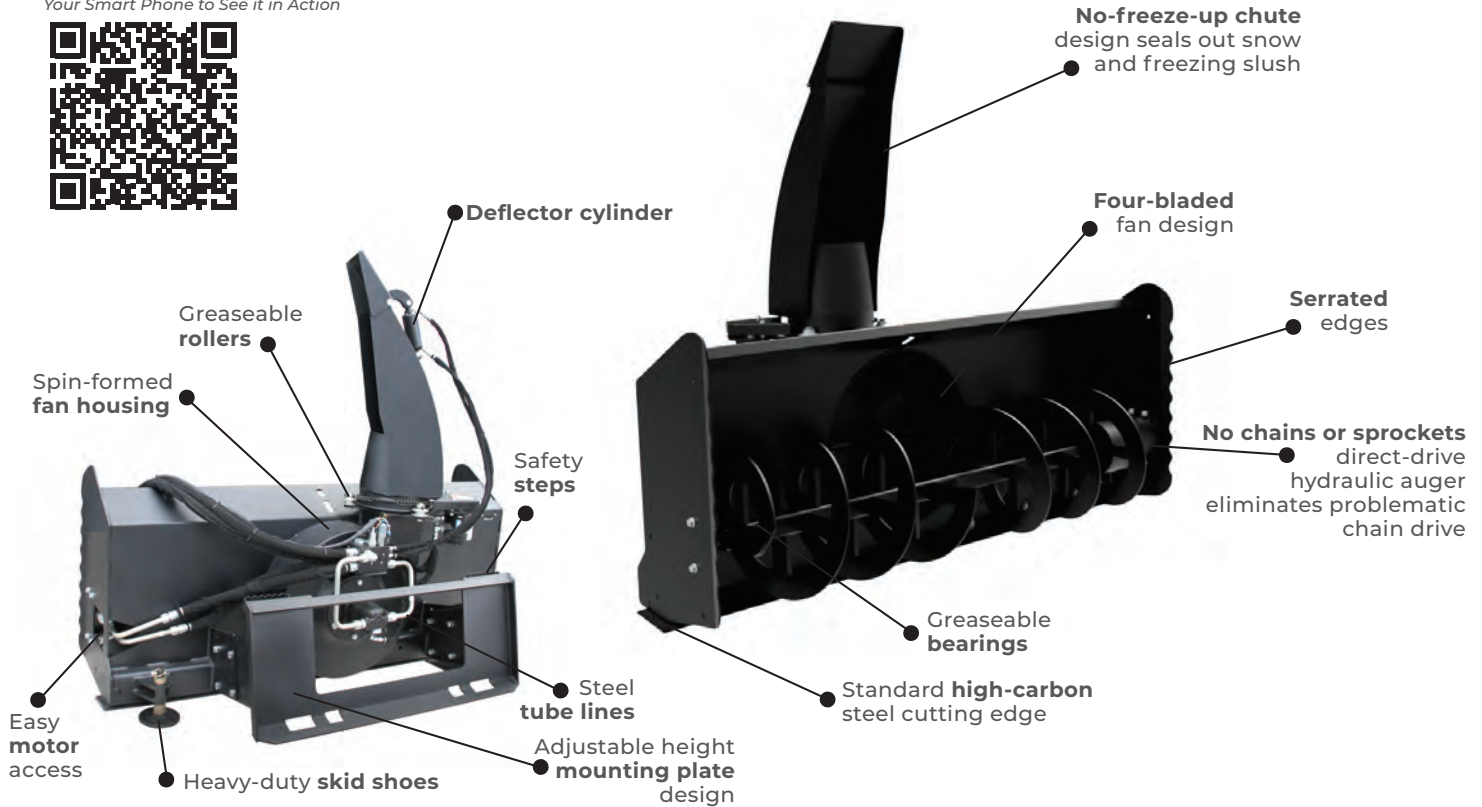
Greaseable bearing



Four-bladed fan design



Take a Picture of This QR Code With Your Smart Phone to See it in Action



## FEATURES & BENEFITS

- Direct-drive hydraulic auger
- Replaceable bolt-on high-carbon steel cutting edge
- Hydraulic relief - no shear pins
- Hydraulic control valve with electric solenoid controls all chute functions with built-in pressure relief system eliminating the need for shear pins
- Easily adjustable depth skid shoes
- Throws snow up to 45'

## SPECIFICATIONS / OPTIONS

Model	2420 - 55"	2420 - 61"	2420 - 73"	2420 - 79"	2420 - 85"
Part Number	901454	901455	901456	901457	901458
Stage	2	2	2	2	2
Width of Cut	55"	61"	73"	79"	85"
Cutting Height	36"	36"	36"	36"	36"
Cutting Edge	5/8" x 6" bolt-on	5/8" x 6" bolt-on	5/8" x 6" bolt-on	5/8" x 6" bolt-on	5/8" x 6" bolt-on
Auger Diameter	18" open flight	18" open flight	18" open flight	18" open flight	18" open flight
Fan Diameter	24" 4-blade	24" 4-blade	24" 4-blade	24" 4-blade	24" 4-blade
Chute Rotation	Hydraulic 270°	Hydraulic 270°	Hydraulic 270°	Hydraulic 270°	Hydraulic 270°
Pressure Relief	Auger	Auger	Auger	Auger	Auger
Casting Distance	Up to 45'	Up to 45'	Up to 45'	Up to 45'	Up to 45'
Shipping Weight	832 lb.	865 lb.	938 lb.	970 lb.	1,003 lb.
Hydraulic Flow Requirement	24-38 GPM	24-38 GPM	24-38 GPM	24-38 GPM	24-38 GPM
Operating Pressure	2,500-3,500 psi	2,500-3,500 psi	2,500-3,500 psi	2,500-3,500 psi	2,500-3,500 psi
Heavy-Duty Skid Shoes	Standard	Standard	Standard	Standard	Standard

### Options

Serrated Auger / Hardened Skid Shoes / Urethane Skid Shoes / Pistol Grip Control Harness / Loader Specific Wire Harness / High Flow Couplers (Installed) / Urethane Cutting Edge / Rubber Cutting Edge / Pistol Grip Control / Factory Installed Couplers

\* For more specification details please see our website [www.erskineattachments.com](http://www.erskineattachments.com)